

Job Name:

System Reference:

Date:

**AE-200A**

- AE-200A is the Master Controller
- Master Controller can operate and monitor up to 50 indoor units
- Expansion Controllers can expand an AE-200A to operate and monitor up to 50 additional indoor units through the touchscreen or web browser
- Network up to three AE-50A or EW-50A to one AE-200A to allow the AE-200A to manage up to 200 indoor units

OPTIONAL LICENSES

- LIC-BACnet Master: BACnet Function
 - Connected air conditioning units can be monitored and operated not only from the existing web browser or the AE-200/AE-50's LCD, but also from the building management system using the BACnet® communication protocol. See LIC-BACnet Data Sheet for more information.
- LIC-Charge Master: Energy Allocation
 - The apportioned electricity billing function is an electric energy
 - apportionment system that apportions electric energy using input from electricity meters with a pulse generator function. The respective amounts of electric energy can be apportioned based on the operating status and capacity of each tenant. See LIC-Charge Data Sheet for more information.
- LIC-PWeb Master: Online Personal Browser
 - Allows tenant managers and general users to control their respective zone conditions via a networked PC, tablet, or mobile phone with or without local remote controllers installed in the space. See LIC-PWeb Data Sheet for more information.

SPECIFICATIONS

- Supports dual set point functionality (connected equipment dependent)
- Displays:
 - CITY MULTI® compressor speed and hi/low pressure
 - AdvancedHVAC Controller (DC-A2IO) input/output status
 - Indoor unit free contact input/output status
 - Space temperature and humidity (from Smart ME or AI controller)
 - Error code (Can be emailed automatically to specified recipients)
 - Unoccupied setback up temperature range
- Functions
 - Hold function (temporarily disables schedules indoor unit model dependent)
 - Initial setting
 - Operation data back-up
- Permits or prohibits remote controller functions:
 - On/Off
 - Change Operation Mode
 - Change Set Point Temperature
 - Filter Status
 - Change Fan Speed
 - Change Air Direction
- External input/output signals can be used for batch operations such as Start/Stop and Emergency Stop (requires PAC-YG10HA)
- Pulse signal input can obtain watt-hour meter, billing data and energy management data based on the cumulative number of pulse signal pulse signals directly input from a metering device
- Temperature set point range limits can be set for local remote controllers
- User defined indoor unit functions:
 - On/Off
 - Monitoring and Operation
 - Operation mode:
 - Auto* (Dual or Single set point)
 - Heat
 - Fan
 - Drying
 - Setback*
- Note: *R2 Series only (connected equipment dependent)
- Temperature Setting
- Fan Speed
- Airflow Direction
- Monitoring and Control:
 - CITY MULTI® indoor units
 - M & P Series units (requires M-Net adapter)
 - Lossnay® units
 - PWFY hydronic heat pump units
 - DIDO controllers
 - CITY MULTI® DOAS
 - Interlock setting enables integration of general equipment inputs/outputs and indoor units
- Scheduling
 - Daily
 - Annually
 - Five pattern of weekly seasonal schedule
- Twenty four scheduled events per day, indoor unit model dependent:
 - ON/OFF
 - Mode
 - Temperature Setting
 - Vane Direction
 - Fan
 - Speed
 - Operation Prohibits
- Trend data:
 - Fan operation time
 - Thermo-on time
 - Set temperature
 - Room temperature
 - AI Controller temperature and humidity (requires PAC-YG63-MCA, 2 inputs total for each controller)
- Memory back up via USB (universal serial bus)
- Memory back up via LAN (local area network) port

AE-200A - SPECIFICATIONS, CONT.

TE-200A CENTRALIZED CONTROLLER

Item	Specifications	
Power Supply	Rated input	100–240 VAC \pm 10%; 0.3–0.2 A 50/60 Hz Single-phase
	Fuse	250 VAC 6.3 A Time-Lag type (IEC 60127-2S.S.5)
M-NET power feeding capability		No specifications**Only an MN converter can be connected.
Ambient conditions	Temperature	Operating Range 0° C to +40° C (+32° F to +104° F)
		Non-operating Range -20° C to +60° C (-4° F to +140° F)
	Humidity	30% to 90% RH (no condensation)
Weight		2.3 kg (5-5/64 lbs)
Dimensions (W x H x D)		11-5/32 x 7-55/64 x 2-17/32 in. (284 x 200 x 65 mm)
Installation conditions		Indoor only **To be used in a business office or similar environment

WEB BROWSER REQUIREMENTS

Item	Requirements	
PC	CPU	1 GHz or faster (2 GHz or faster recommended)
	Memory	2 GB or more
	Screen Resolution	1024 x 768 or higher recommended
	OS/Java® execution environment	<ul style="list-style-type: none"> • Microsoft® Windows® 8.1 • Microsoft® Windows® 10 • Mac OS® X10.11 or later (Only CSV File Download Tool is not guaranteed to work.) <p>* Java® execution environment (Oracle® Java or AdoptOpenJDK) is required. Verified to work properly on Oracle® Java8 (https://www.java.com/download/) and AdoptOpenJDK11 HotSpot (https://adoptopenjdk.net/).</p> <p>* The version of the Oracle® Java can be verified by clicking [Java] in the Control Panel.</p> <p>* Install the Java® execution environment that is appropriate for your Air Conditioner Control Tool.</p> <p>When using a 64-bit Air-conditioner Control Tool, install 64-bit Oracle® Java or AdoptOpenJDK</p>
	Browser	<ul style="list-style-type: none"> • Microsoft® Internet Explorer® 11 • Microsoft® Edge® • Google Chrome™ Ver. 83 • Safari® 13
	Microsoft® Excel®	• Microsoft® Excel® 2010 or later

	Item	Requirements
Smartphone	Safari® 12	<ul style="list-style-type: none"> • iPhone 6s (Plus) (iOS 10.1.1 or later) • iPhone 7 (Plus) (iOS 10.1.1 or later) • iPhone SE (iOS 10.1.1 or later) • iPhone XR (iOS 12.1.1 or later)
	Google Chrome™ Ver. 83	<ul style="list-style-type: none"> • Galaxy SC-04J (Android™ 8.0.0) • HUAWEI P9 (Android™ 6.0 or later) • Xperia Z5 (Android™ 6.0 or later)
Tablet	Safari® 13	<ul style="list-style-type: none"> • iPad Air 2 (iOS 12.2.2 or later) • 9.7-inch iPad Pro (iOS 10.1.1 or later)
	Google Chrome™ Ver. 83	• MediaPad T2 7.0 Pro (Android™ 5.1.1)

Note: Registered trademarks

- Android is a registered trademark of Google LLC. in the U.S. and other countries.
- Apple is a trademark of Apple Inc., registered in the U.S. and other countries.
- Google is a registered trademark of Google LLC.
- Google Chrome is a registered trademark of Google LLC. in the U.S. and other countries.
- Edge is a trademark or registered trademark of Microsoft Corporation in the U.S. and other countries.
- Internet Explorer is a trademark or registered trademark of Microsoft Corporation in the U.S. and other countries.
- The official name of Internet Explorer is "Microsoft® Internet Explorer Internet browser".
- iOS is a trademark or registered trademark of Cisco in the U.S. and other countries and is used under license.
- iPad is a trademark of Apple Inc., registered in the U.S. and other countries.
- Mac OS is a trademark of Apple Inc., registered in the U.S. and other countries.
- Microsoft Office Excel is a product name of Microsoft Corporation in the U.S.
- Windows is a trademark or registered trademark of Microsoft Corporation in the U.S. and other countries.
- The official name of Windows is "Microsoft® Windows® Operating System".
- Safari is a trademark or registered trademark of Apple Inc. in the U.S.
- Nexus is a registered trademark of Google LLC. in the U.S. and other countries.
- Galaxy is a trademark or registered trademark of Samsun Co., Ltd.

Note: Company name or product name that is described in this manual may be a trademark or a registered trademark of each company

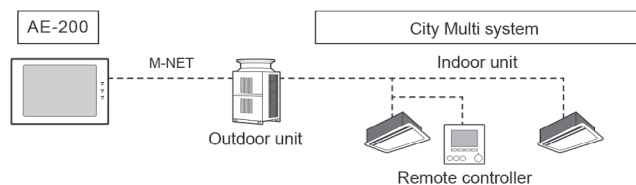
MODEL: AE-200A - SYSTEM CONFIGURATION

CONTROLLING 50 OR FEWER UNITS OF EQUIPMENT

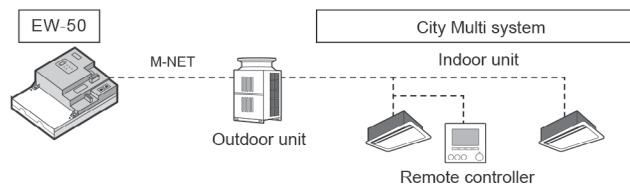
*AE-200A is indicated as AE-200

*AE-50A is indicated as AE-50

1. AE-200



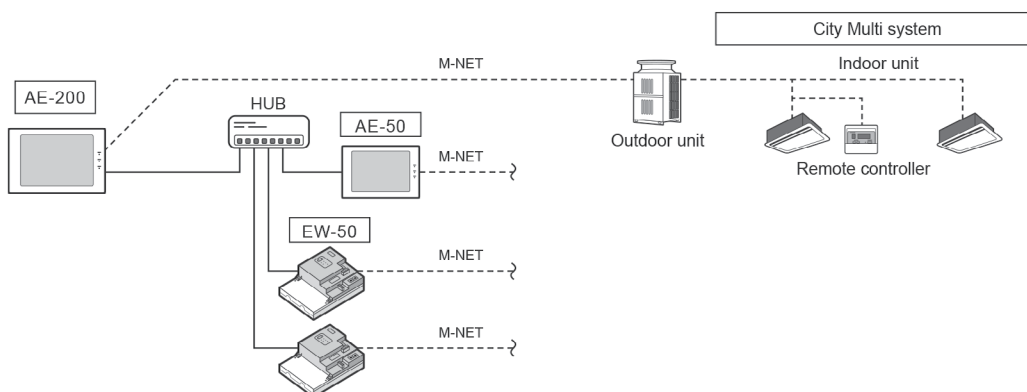
2. EW-50



CONTROLLING MORE THAN 50 UNITS OF EQUIPMENT (WITH CONNECTION TO AN AE-200 CONTROLLER)

Note

AE-200 is required when using AE-50



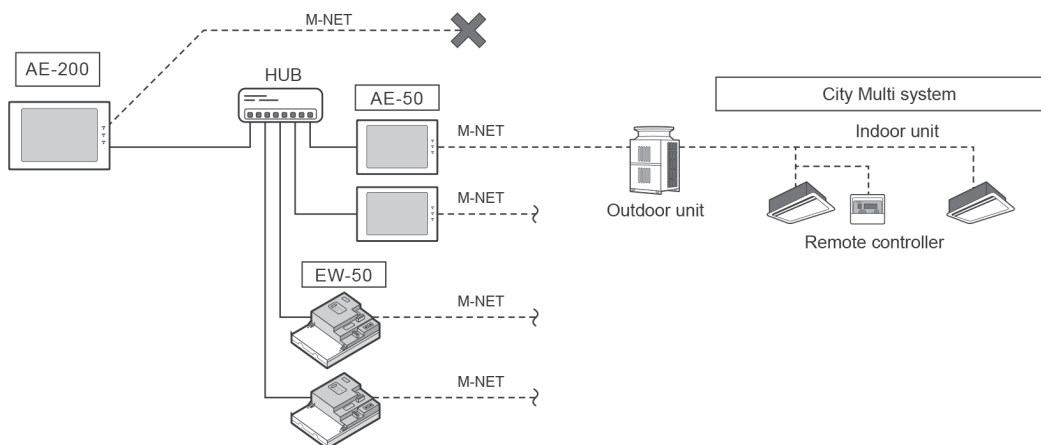
WHEN USING AN APPORTIONED ELECTRICITY BILLING FUNCTION

Notes

AE-200 is required to use a billing function.

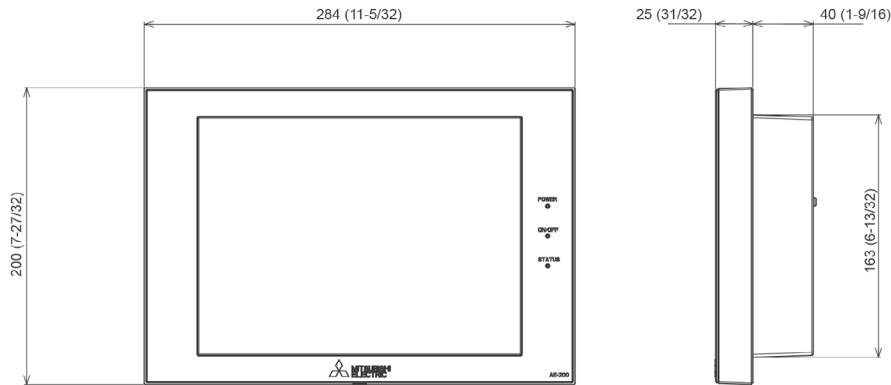
AE-200 M-NET cannot be used when a billing function is used

"Charge" license is required to use a billing function.

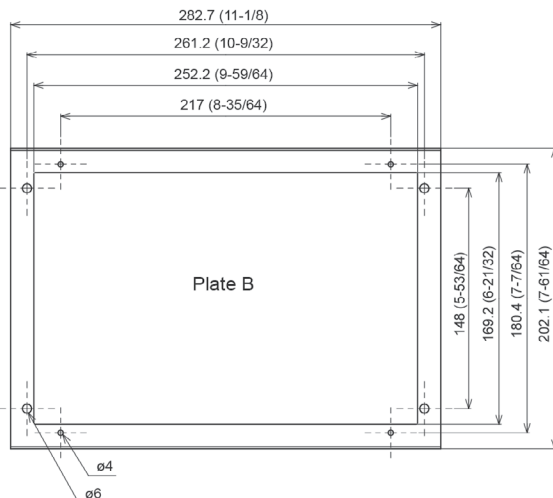
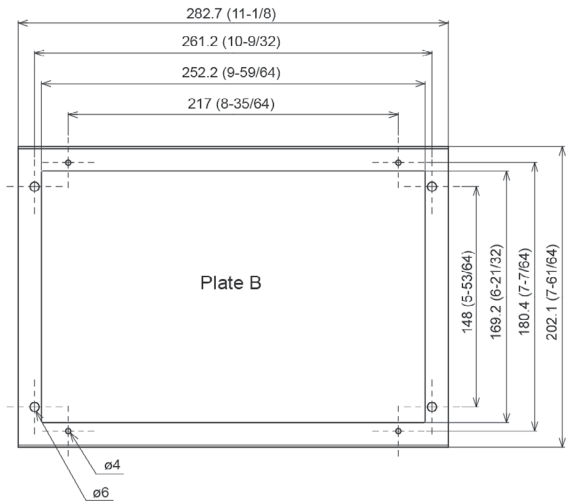
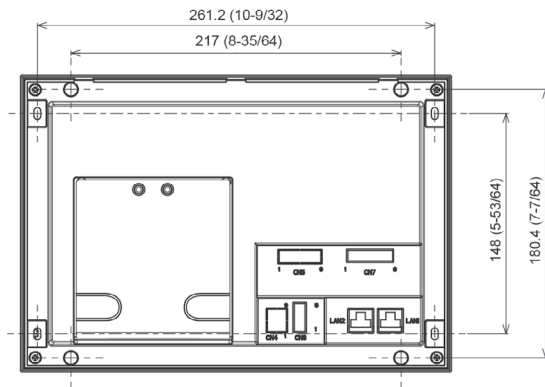
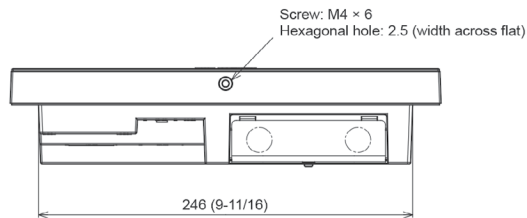


AE-200A - DIMENSIONS

Unit: mm (inch)



*AE-200A is indicated as AE-200
*AE-50A is indicated as AE-50



1340 Satellite Boulevard, Suwanee, GA 30024
Toll Free: 800-433-4822 www.mehvac.com